

# VILLAGE OF LIPTON

## June 2026 Newsletter

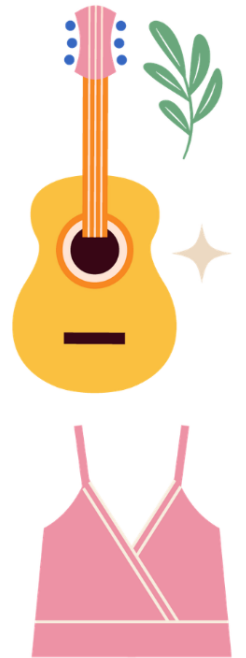


### LIPTON COMMUNITY GARAGE SALE

June 13<sup>th</sup>, 2026

- Lipton Rink - 215 Osidge St.
- 116 Ceylon St.
- 210 Fife St.
- 212 Miller St.

306-336-2505 | [lipton@villageoflipton.com](mailto:lipton@villageoflipton.com)



## Food Truck season is HERE!



**JUNE 12**  
**Strong Burrito Co.**

Main St. Lipton  
11:00 am through supper



**JUNE 23**  
**Eddie's BBQ**

Main St. Lipton  
11:00 am through supper





# Class OF 2026

Ceremony: June 12<sup>th</sup> at 5:00 p.m at the school

*Congratulations Graduates!*



Eyoyum  
Bear



Shelby  
Bingham



Aihdyne  
Gopher



Ty  
Haanstra



Mitchel  
Huber

*Lipton School*



*Class of 2026*



Emma  
LaCroix



Kadinh  
Lien



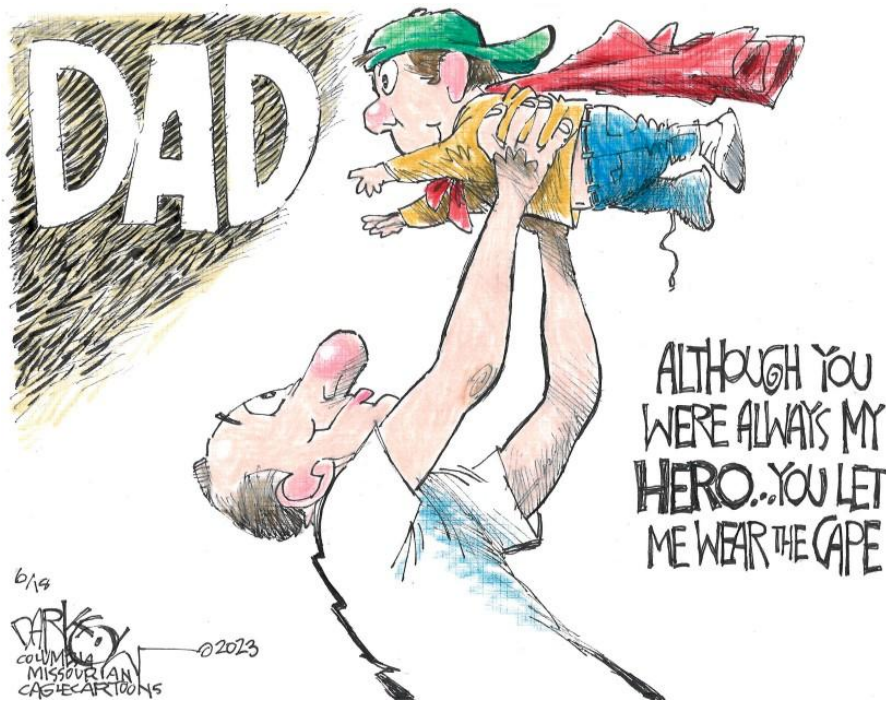
Cashton  
McKay



Hailey  
Reynolds



Marshall  
Schneider



## Lipton Memorial Gardens

A columbarium has been installed at the Lipton Memorial Gardens. This beautiful addition to the space houses 24 niches available for purchase.

Each niche can hold two placements. Small mementos may be included inside the niche, and it can be opened upon request to the Village Office.

\$1200.00 per niche | \$150.00 per door opening  
Wall plaque: Based on cost at time of ordering



For more information please contact the Village office  
306-336-2505 | [lipton@villageoflipton.com](mailto:lipton@villageoflipton.com)

## North Valley Waste Auth.

### SUMMER HOURS

Apr. 1 – Nov. 30

Mon to Saturday:

8 am – 4:30pm

Sun: Closed

**\*CLOSED STAT HOLIDAYS\***

*Extreme weather events  
can affect roads*

## Library Hours

See calendar for this  
month's hours



## Trading Post Hours

Friday: 11am-5pm

Saturday: 11am-5pm

Sunday - 11am-5pm

## Notary Services

Notary services are offered  
at the office. \$10/signature.

## Meeting Days

**Council Meetings:**

1st & 3rd Weds. 7pm.

**Fire Dept. Meeting:**

2<sup>nd</sup> and last Thurs

**RM of Lipton Meeting:**

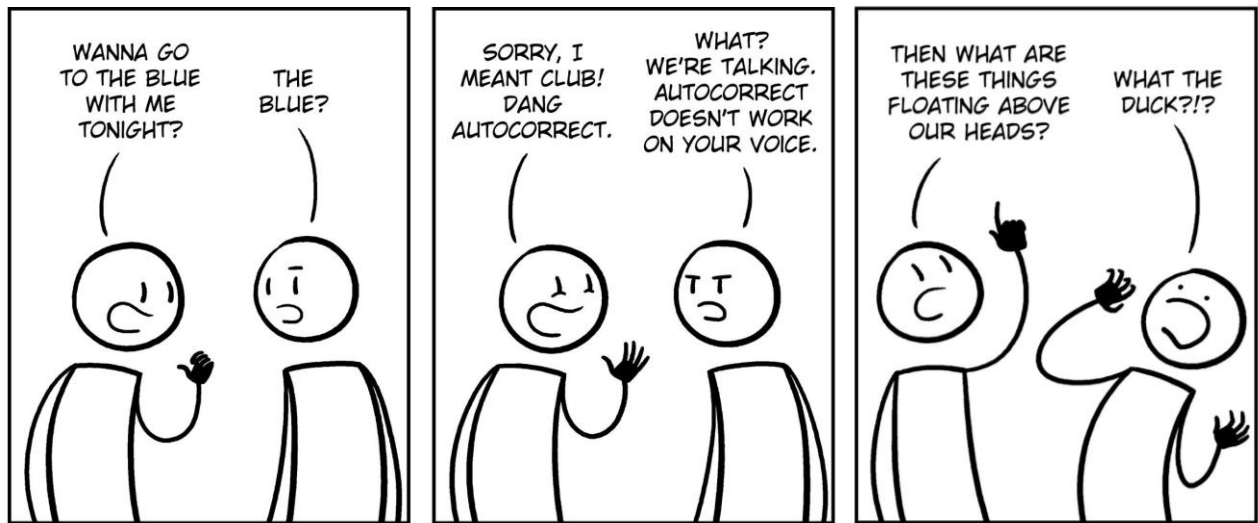
3rd Tues of the month

**New Horizons Meeting:**

3rd Tues. 1:30 pm.

**Rec Org: 2<sup>nd</sup> Wed. 7 pm.**

*Dates subject to change*



@CHRISHALLBECK

# FACILITIES TO RENT



The Community Hall is a large, wheelchair accessible venue complete with a full kitchen, stage, sound system, piano and organ, tables, chairs, and bar area. For more information or booking please call the Village office at 306-336-2505.



The Lipton Rec Centre is also available for rent. The Rec Centre, also fully wheelchair accessible, offers the New Horizons room. It has a stocked kitchen, tables and chairs. There is also a bowling alley and a large pool room. For more information or booking call 306-336-2517.



The Legion is a newly renovated and wheelchair accessible centre available for rent. It can seat 50 people with tables or 65 without. There is a kitchenette available (no stove). For more information or booking contact 306-331-7343 (please leave a message).

## LIPTON MUD BOGS

June 20<sup>th</sup>, 2026

11:00 a.m. to 6:00 p.m.

Admission: \$15      10 and Under: Free  
 For more info call Darrell at 306-331-8908



# OUTDOOR FIRE SAFETY TIPS

It's the time of year where sitting around a fire, while a fun way to spend an evening with family and friends, can become dangerous if proper care is not taken. When sitting around campfires please take extra precaution during dry weather.

- If campfires are permitted, they need to be a safe distance away from anything flammable.
  - Clear away dry leaves and sticks, overhanging low branches and shrubs.
  - Avoid burning on windy, dry days.
  - Watch children while the fire is burning. Never let children or pets play near or stand too close to the fire.
    - Attend to the campfire at all times. A campfire left alone for only a few minutes can grow into a damaging fire.
      - Keep a campfire small and do not let the flames get too high.
      - Make sure your firepit is covered to contain sparks.
      - Never use gasoline or other flammable or combustible liquids.
      - Always have a hose, bucket of water, or shovel and dirt nearby to put out the fire. When putting the fire out always make sure it is completely out before leaving the area.
      - Treat a burn right away. Cool the burn with cool water for 3 to 5 minutes. Cover with a clean, dry cloth. Get medical help if needed.



## Lipton Fire Department

At the annual SUMA Convention in April, three members of our department were honoured with long-time service awards.

The Lipton Volunteer Fire Department sincerely thanks Stan Norrish (20 years), Rob Schoonbaert (20 years), and Ron Tomolak (20 years) for their time, commitment, and dedication.

We are proud to recognize their contributions and grateful for the many years they have devoted to keeping our community safe.



## The Latest Version of Smart Phones For Dads....



The day after Father's Day.



## DISCOVER WHAT THE VILLAGE OF LIPTON HAS TO OFFER

Explore a warm and welcoming community nestled between highways #22 and #35

Lipton has a K-12 school, curling rink, skating rink, and a recreation centre with a bowling alley and pool hall. The Rec Centre is available to rent to host functions, as well as the Legion and the Community Hall. The Village is also home to various businesses, and is actively searching for new additions to diversify our Main Street.

The community is a vibrant place, with active volunteer groups that host various events throughout the year. We have a diverse business community, and are actively searching out new businesses to bring to the Village.



**Lipton is actively searching for investors and developers to help the Village reach its full potential!**

**COMMERCIAL AND RESIDENTIAL LOTS ARE AVAILABLE FOR PURCHASE with incentives for development.** We are ideally located near Melville, Regina, Fort Qu'Appelle, and the surrounding lake communities.

Over the last six years the provincial and federal governments have invested 3 million dollars in infrastructure in Lipton.

**RO Water plant: \$1.5 million - Drainage: \$151 thousand  
Lagoon: \$1.4 million**

**Are you looking for a fantastic community for your business, or know someone who is need of a location? Stop by or call the Village Office!**

# Dad Jokes

Did you hear about the guy who drank invisible ink? He's at the hospital waiting to be seen.

I wondered why the baseball was getting closer and closer. Then it hit me.

What do you get when you cross a fish with an elephant? Swimming trunks.

Did you hear about the guy who's afraid of escalators? He takes steps to avoid them.

Why did the guy get fired from the calendar factory? He took a day off.

What do you call someone who raises hens? A chicken tender.

What do you call a happy cowboy? A jolly rancher.

How did the piano get locked out of its car? It lost its keys.



**CO-OP** You are invited to the **Prairie Co-op**

## CUSTOMER APPRECIATION BARBECUE

THURSDAY  
**JUNE 4 11AM-1PM**

Melville Home Centre  
Fort Qu'Appelle Marketplace  
Ituna Farm Supply  
Kelliher Farm Supply  
Lipton Farm Supply  
Cupar Farm Supply

**FREE hamburger or hot dog and drink**



START YOUR JOURNEY WITH US

# BECOME A PARAMEDIC

Are you interested in pursuing a career in the healthcare field?

Be a paramedic - the road to saving lives starts here!

Cupar Lions Ambulance Service is offering a sponsorship program for schooling.

What to expect:

- All expenses paid for Primary Care Paramedic course.
- Guaranteed employment post-graduation and successful Primary Care Paramedic licensing.

To inquire, call (306) 723-4218 or (306) 726-8273 for more information.



**WE ARE HIRING!**

Startdate: **IMMEDIATELY, UNTIL POSITIONS FILLED**

**CUPAR LION'S AMBULANCE SERVICE IS ACCEPTING APPLICATIONS**

**Positions available:**

- ✓ Primary Care Paramedic (PCP)
  - Fulltime and/or Part time positions
  - 24-hour shifts (8 hours regular + 16 hours on call)
  - Competitive wages + job performance Bonuses
  - Pension and Benefit Plans available
- ✓ Casual positions also welcome to apply

On Site staff accommodations are provided

**Qualifications Required:**

- Primary Care Paramedic Certificate
- Current unrestricted PCP Licence from SCOP
- Unrestricted Class 4 Drivers License
- Current BLS/CPR
- Current ITLS/PHTLS

CUPAR IS A SMALL COMMUNITY LOCATED 45 MILES NORTHEAST OF REGINA  
CUPAR AMBULANCE DOES APPROX. 600 CALLS PER YEAR AND USES NEW AND MODERN EQUIPMENT

**More information**  
Call: (306) 723-4218  
(306) 726-8273

**Drop your resume**  
cuparambulance@sasktel.net

The locations for disposing of trees/branches and grass/leaves are marked out on the map below. Please be sure you are dumping these items in the appropriate locations.

Please do not dispose of branches in the compost pile.

Likewise, please do not dispose of construction lumber in the tree pile.

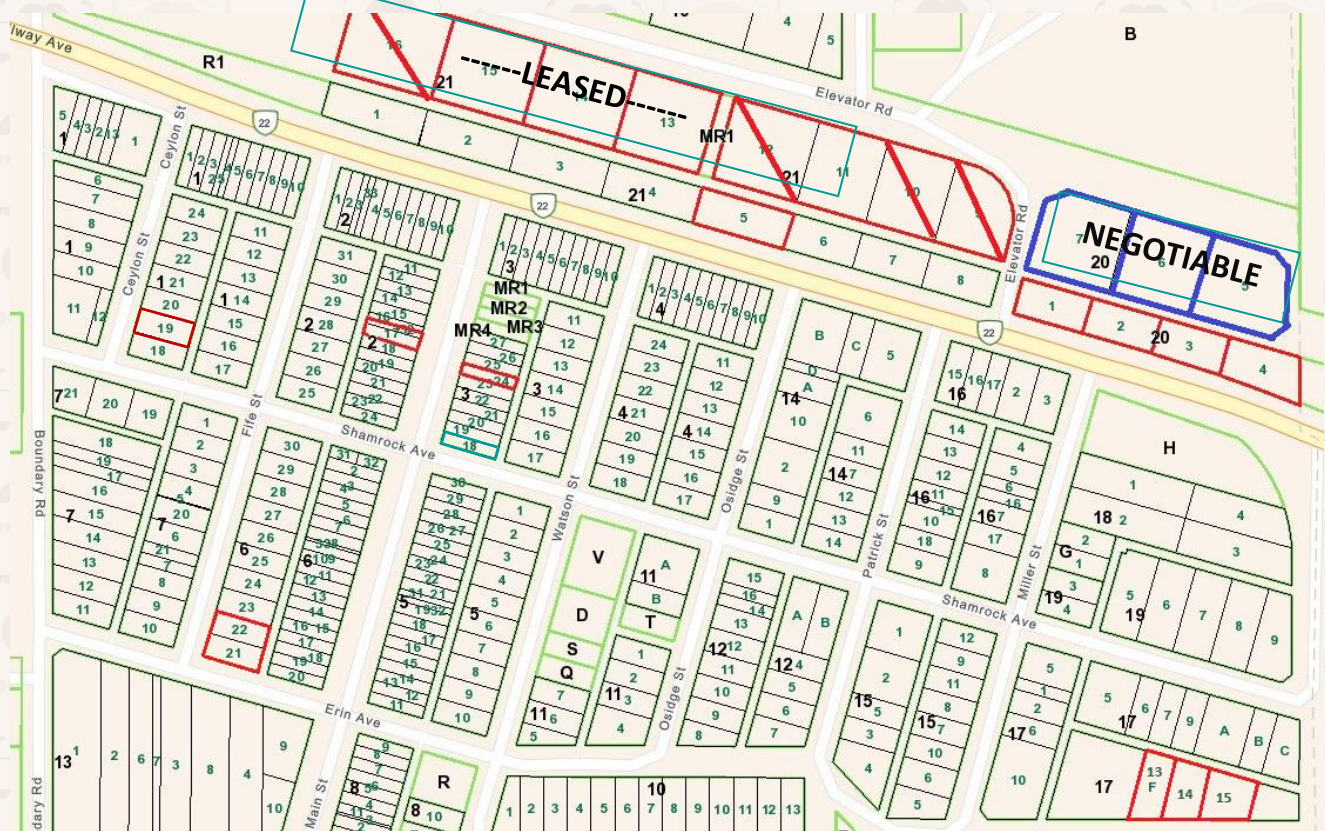
Correct use enables us to continue to provide these services to our residents.



## LOTS FOR SALE IN LIPTON

Lipton is a vibrant and active community to live and grow, with both residential and commercial lots available for sale. The Village offers incentives to build. Available lots are outlined in red.

Please contact the office for further details at 306-336-2505.



# JUNE 2026

Sun	Mon	Tues	Weds	Thu	Fri	Sat
	1	2 Office closed Library 11-5	3 Office closed	4 Co-op BBQ Office closed Library 12-6 Recycling	5 Office closed	6
7	8	9 FOOD TRUCK	10 Library 11-5	11 Fire Dept Meeting	12 Lipton Grad Library 12-6	13 Community Garage Sale
14	15	16	17 Council Meeting Library 11-5	18 Recycling	19 Library 12-6	20 MUD BOGS!
21 HAPPY Father's Day	22	23 FOOD TRUCK Library 11-5	24	25 Library 12-6 Fire Dept Meeting	26	27
28	29	30				