

# Village of Lipton

## February 2024 Newsletter

### APPRECIATION LUNCHEON

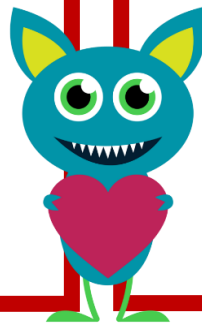
LIPTON NEW HORIZONS AND REC CENTRE

Have you been a VOLUNTEER at any of our Perogie Bees, Fall Supper, Building Maintenance Repairs team, Coffee Morning worker, Catering team, Bowling Supervisor, etc.? Then come on out and let us show our appreciation.

### Volunteer Luncheon

Sunday February 4<sup>th</sup> 1:00 p.m.

Bowling, pool, shuffle board  
available after lunch



### Lipton Library Cookie Decorating

Stop by the Lipton Library on

**February 14<sup>th</sup>, 2024**

And decorate a sugar cookie!

**12:00 – 6:00 p.m.**

Free – Open to all ages

Cookies provided by  
Sweet Mama's Bakery & Cafe



Lipton Ideal events  
proudly presents



and  
a

*Damn Good  
Band*

**Supper:**

6:00 p.m.

**Entertainment:**

8:00 p.m.

\$60/ticket

306-331-9225

## Friday Night Supper at Lipton Skating Rink

Delicious food and great prices!

Open 5:30 to 7:00 p.m.

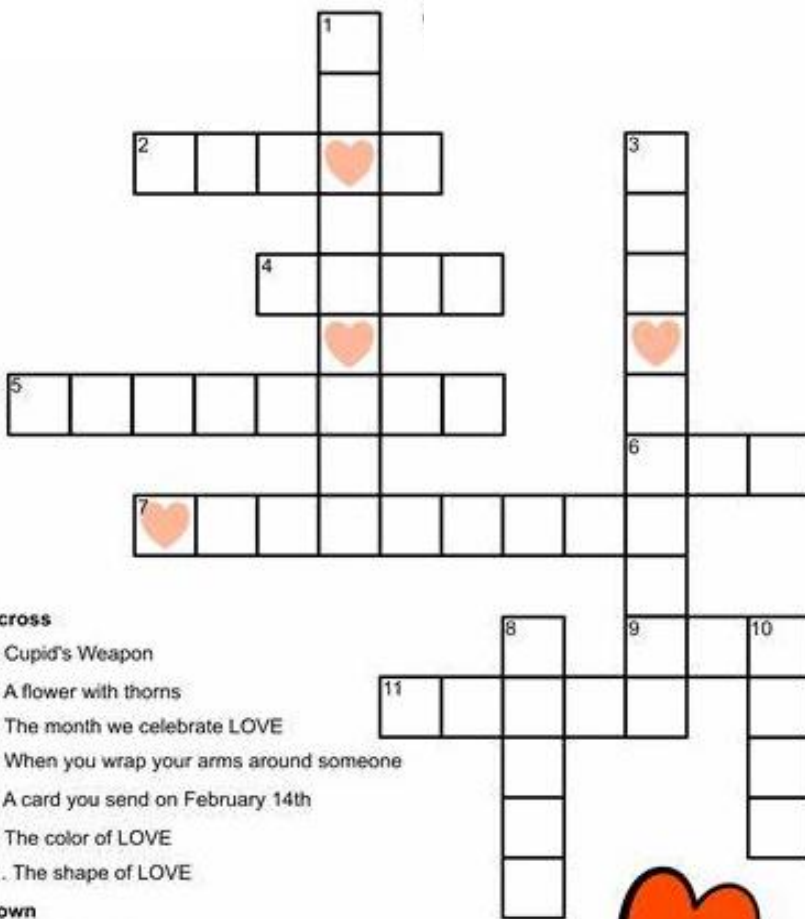


Homemade burgers, homemade perogies, chicken strips, popcorn chicken, mozzarella sticks, hot and cold drinks, candy and all other rink favourites!

## Walking Path Open

The walking path leading from Elevator Rd. to the pedestrian crosswalk on Main Street is now cleared.

Please use the crosswalks properly,  
and if you are a driver please watch for pedestrians  
and the flashing lights.



### Across

2. Cupid's Weapon
4. A flower with thorns
5. The month we celebrate LOVE
6. When you wrap your arms around someone
7. A card you send on February 14th
9. The color of LOVE
11. The shape of LOVE

### Down

1. A Sweet Treat
3. His honey, baby, \_\_\_\_\_
8. Full of Joy
10. When two people go out



## North Valley Waste Auth.

Nov. 1 – June 30

MONDAY – FRIDAY

9:00 am – 4:00 pm

SATURDAY 11:00 – 2:00 pm

Closed Sundays and Stats

## Library Hours

See calendar for open dates.

Open from 12:00 – 6:00 p.m.



## Trading Post Hours

Fri, Sat and Sun:

11:00 am to 5:00 pm.

## Notary Services

Notary services are offered at the  
office. \$10 per signature.

## Email Address

Please use this address for any  
correspondence.

[lipton@villageoflipton.com](mailto:lipton@villageoflipton.com)

## Meeting Days

**Council Meetings:**

1st & 3rd Weds. 7pm.

**Fire Dept. Meeting:**

Last Thurs of the month

**RM of Lipton Meeting:**

3rd Tues of the month

**New Horizons Meeting:**

3rd Tues. 1:30 pm.

**Rec Org:** 1st Wed. 7 pm.

*Dates subject to change*



# Welcome to Kindergarten!



## Prairie Valley School Division is accepting registrations for Kindergarten

Children who are five-years old as of Dec. 31, 2024  
are eligible for the 2024-2025 school year.

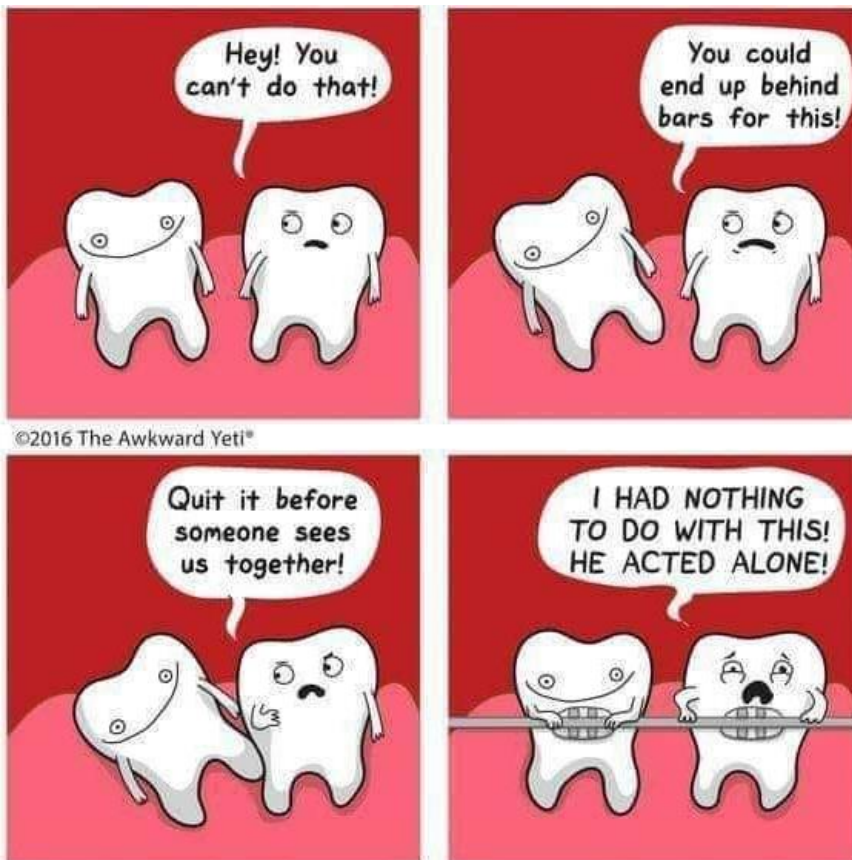
To register and learn more about Kindergarten in your  
community please contact:

### Lipton School

306.336.2200

[liptonschool@pvsd.ca](mailto:liptonschool@pvsd.ca)

<http://lipton.pvsd.ca>



©2016 The Awkward Yeti®

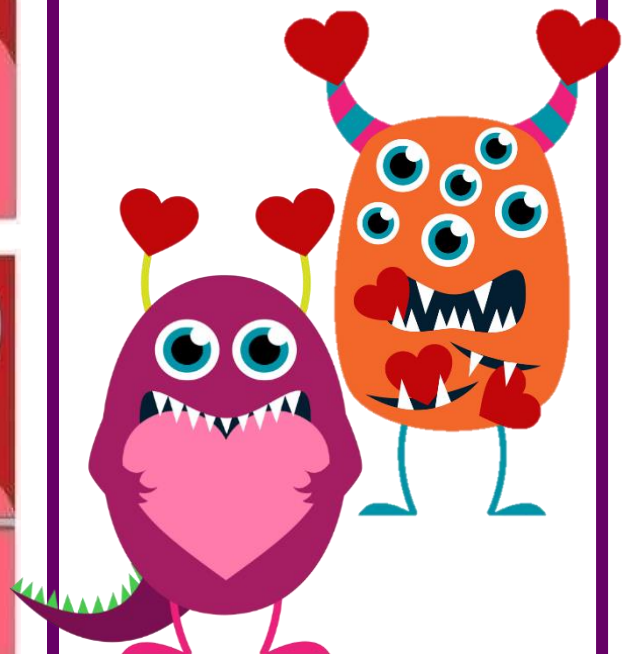
[theAwkwardYeti.com](http://theAwkwardYeti.com)

## Brett's Home Cooking

Soups | Oven Meals  
Microwave Meals

Homemade  
Gluten and Lactose free  
options available


Search  
"Brett's Home Cooking" on  
Facebook or call  
306-331-7971 for pricing  
and availability




# Did you know?

- Rubber bands will last much longer when they are refrigerated.
- Japan has 23 vending machines per person.
- Sign language has tongue twisters called finger fumblers
- A jiffy is a proper unit of time. It is exactly 1/100th of a second
- You can't hum while holding your nose
- Children's book author, Roald Dahl was a spy for the British Security Coordination
- Bottled water has an expiration date. It's for the bottle itself, and not the water.
- The Philippines consists of 7,641 islands
- People ate arsenic to improve their skin in the late 19<sup>th</sup> century
- Armadillo shells are bulletproof
- We are born with only two innate fears: the fear of falling and loud sounds. The rest of your phobias are learned over time.

- Kangaroo words are words that contain their own synonyms. Examples include the words **chocolate**, **masculine**, **blossom**, and **chicken**.
- Monarch caterpillars breathe through holes in the sides of their bodies.



**Storm Chaser**  
Chris Chittick



Join us at the school for a **FREE** presentation by one of the top professional storm chasers in the world! 'Tornado Hunters' has aired on CMT, Discovery & Netflix! Join us for a science driven, educational and motivational talk about extreme weather and mental health!

**06 | Feb | 2024**  
7:00-8:00pm

**OPEN TO THE COMMUNITY**  
We hope you can join us!

Check out the other fun, free opportunities on Feb 6th at our Cougars & Community Event - see additional poster for details!



**SHROVE TUESDAY**  
**February 13**  
**Lipton Skating Rink**

5pm-7pm

adults \$10  
10 & Under \$5  
Preschool Free

**Free skating courtesy of**  
**Lipton Parks & Recreation**

# WANT TO OWN A PIECE OF THE LIPTON CURLING RINK?

Help us raise the necessary  
funds to repair the ice  
plant and get the doors  
open again!

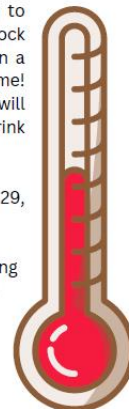
As you may be aware, the Lipton Curling Club has been faced with a major repair to the ice plant. Current quotes for repair range in price from \$65,000 - \$112,000 and we will not be able to open our doors this season. A portion of the required funds have been secured by the generous donations from our local Prairie Coop. This still leaves us with a substantial amount of money to be raised and we are asking for your help to open for the 2024-2025 curling season.

We are offering you or your business the unique opportunity to 'own' a piece of our curling rink! We will be selling curling rock handles! For a nominal fee of \$250, your name will be put on a curling rock handle. Imagine being the winning rock in a close game! Larger donations are also greatly appreciated, and all donations will be recognized on a project sponsorship sign in the lobby of the rink for all to see.

Purchases of a handle and donations made before February 29, 2024, will be issued a tax receipt for the 2023 tax year.

We appreciate your willingness to help re-open our beloved curling rink for next season. If you have any questions, please reach out to any of the board members listed below.

President - Ron Tomolak 306-331-9610  
Vice President - Calvin Lutz 306-331-7069  
Treasurer - Brett Tomolak 306-331-7971



**YOUR DONATIONS ARE  
GREATLY  
APPRECIATED**



## Lipton Curling Club Annual Grand Slam Cash Calendar 2024

When: Sold Till March 31<sup>st</sup>

Drawn each day in April win up to

# \$2500.00

Only 300 Tickets Available

Sold By Local Curlers To help ensure our  
rink can stay open!

**\$20** each

Contacts to put tickets in your Hands are:

Brett Tomolak @ 306-331-7971

Calvin Lutz @ 306-331-7069

Marie-Anne Gyorfi @ 306-331-5310

James Slywka @ 306-331-8604

Donna Lutz @ 306-331-9496

The Lipton Curling Club  
is in Need of a new Ice  
Plant your Support Puts  
us Closer and closer to  
making that happen one  
ticket at a time

Follow us For Winners & other  
Fundraising Efforts

@LiptonCurlingClub

facebook

SLGA Lottery Licence# SR23-4508



### Love is in the Air

Come and skate our magical loop and then enjoy  
some soft music by the fire. Or, you can warm up in  
the tipi when you return from a stroll under the stars.

## Celebrate Valentine's Day in Echo Valley Provincial Park

Friday February 16, 2024

- Go for an illuminated snowshoe hike
- Relax in our sauna (book in advance through Back2Nature Wellness)
- Enjoy valentines themed hot chocolate and brownie treats at CJs Bakery.

Visitor Centre open until 8 p.m. - Park entry required

   #SaskParks  
saskparks.com



## NOTICE TO TENDERERS

### VILLAGE OF LIPTON LAGOON UPGRADES

Tenders are invited from General Contractors for the Construction of Lagoon Upgrades for the Village of Lipton. Sealed Tenders will be received at the office of the Consulting Engineer up to 2:00 p.m., C.S.T. Thursday, February 22<sup>nd</sup>, 2024 and will be opened immediately thereafter.

The work includes:

- .1 Construction of a 34,000 m<sup>3</sup> storage cell, complete with compacted clay liner;
- .2 Miscellaneous supporting infrastructure including concrete dump chute, manhole type transfer structure, overflow piping, and effluent release piping;
- .3 Various site improvements, including drainage ditching, perimeter fencing, topsoil replacement, and seeding;
- .4 Provision of roads for ingress and egress to the location of all work required;
- .5 Clean-up of site;
- .6 Repair of defects for one year after completion of the work;
- .7 The lagoon facility is to be fully operational by November 30<sup>th</sup>, 2024.

General Contractors may obtain a digital copy of the Contract Documents from the office of the Consulting Engineers.

Each Tender must be on the forms provided and be accompanied by a certified cheque or bid bond in the amount of Ten Percent (10%) of the Tendered Amount.

The Owner reserves the right to reject any or all tenders and will not necessarily accept the lowest tender.

BCL Engineering Ltd.  
 200 - 302 Wellman Lane  
 Saskatoon, SK S7T 0J1  
 Ph: (306) 477-2822  
 Fax: (306) 955-3755  
 Email: bcl@bcl-eng.ca

## Commercial Lots for Sale

The Village of Lipton has commercial lots for sale. Contact the office for further details at 306-336-2505.

Lots 16-17 Blk 2 Plan 62666 - Main St.

Lot 24 Blk 3 Plan 6266 - Main St.

Lot 1 Blk 20 Plan 82R29263 - Railway Ave.

Lot 2 Blk 20 Plan 82R29263 - Railway Ave.

Lot 3 Blk 20 Plan 82R29263 - Railway Ave.

Lot 4 Blk 20 Plan 82R29263 - Railway Ave.

Lot 5 Blk 21 Plan 82R39263 - Railway Ave.



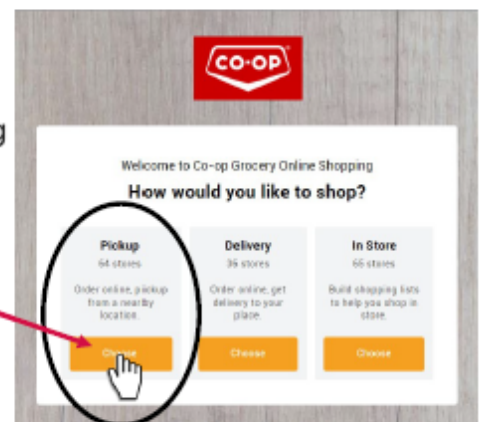
# ONLINE | SAME-DAY SHOPPING | SERVICE

**ORDER ONLINE AT [WWW.SHOP.CRS](http://WWW.SHOP.CRS) FOR DELIVERY FROM PRAIRIE CO-OP FORT QU'APPELLE MARKETPLACE TO PRAIRIE CO-OP IN LIPTON!**



**Take advantage of our FREE grocery delivery service to Lipton! Here's how!**

1. Orders must be placed through [WWW.SHOP.CRS](http://WWW.SHOP.CRS) only.
2. Create an online shopping account, or log into your existing shopping account.
3. **All orders will be fulfilled by Prairie Co-op @ Fort Qu'Appelle Food Store.** Select Pickup to find the Fort Qu'Appelle Food Store on the list.
4. Scroll down the list, or enter your address to find **Prairie Co-op @ Fort Qu'Appelle Food Store** in the list. Choose this store. *This is only to choose the Food Store that will be fulfilling the order; NOT the actual pickup location.*
5. Start shopping! Add your items to your virtual grocery cart.
6. **If you want to take advantage of the free grocery delivery service to Lipton, you must add the line "Deliver to Lipton Store" in the comments/special instructions section at checkout.** There is no charge for this service!
7. **Orders must be placed through [WWW.SHOP.CRS](http://WWW.SHOP.CRS) on Thursday morning** to ensure current flyer pricing and **same day delivery** to Prairie Co-op in Lipton. Groceries will arrive by 4pm on Thursdays.



**ALL CUSTOMERS WILL BE CALLED TO ADVISE THEM THAT THEIR ORDER IS READY FOR PICKUP.**

**Please ensure a phone number is included in your online profile.**

**Any questions? Call the Prairie Co-op Fort Qu'Appelle Marketplace at 306.332.5623 and speak to **Cory Pereyma**, Store Manager, **Cordell Bachelu**, Grocery Manager, or **Stacey Kifferling**, Fresh Foods Manager.**



Prairie

**LOCAL** | **TRUSTED**  
**CONVENIENCE** | **CARE**



The Prairie Co-op Lipton Farm Supply is a depot of the  
**Prairie Co-op Pharmacy.**

Have your prescriptions filled by the Prairie Co-op Pharmacy  
in Melville, and pick them up in Lipton.

**This location does not sell any medical products,  
nor does it keep drugs on hand.**

**For all questions related to the pharmacy and  
prescriptions, contact the Prairie Co-op Pharmacy directly  
at 306.728.5437 ext. 2.**

**DEPOT  
HOURS:**


**MONDAY—FRIDAY  
9 AM — 6 PM**



**HOW TO GET YOUR PRESCRIPTIONS DELIVERED TO THE LIPTON FARM  
SUPPLY PHARMACY DEPOT**

1. Call the Prairie Co-op Pharmacy to get your prescriptions transferred from your existing Pharmacy to the Prairie Co-op Pharmacy. We will get all the required information from you, and take it from there.
2. You call (306) 728-5437 ext. 2 when you need a prescription filled— call by **6:00pm Wednesday** to have it delivered Thursday.
3. You will pay for the prescription before it is delivered, and the transaction will be put through your Prairie Co-op number to ensure you collect patronage.
4. You pick up your prescription late Thursday, or any time after that is convenient for you!
5. Your prescriptions are kept in a locked area. Your privacy is very important to us.

# February 2024

Sun	Mon	Tue	Wed	Thu	Fri	Sat
<div></div> <div><i>Who always has a date on Valentine's Day? A calendar.</i></div>				1 Semester 2 Begins	2 Library Open Supper at the Rink 5:30 - 7	3 NHL All-Stars
4 Rec Centre Appreciation Luncheon	5	6 Library Open  Chris Chittick presentation at the school	7  Council Meeting	8 Library Open  Recycling Bins	9  Supper at the Rink 5:30 - 7	10  Ideal Events Steak Supper
11  NFL Superbowl	12	13  Shrove Tuesday – Skating Rink	14 Library Open – Cookie Decorating  <i>Valentine's Day</i>	15	16 Library Open  Supper at the Rink 5:30 - 7	17
18	19  No School Family Day Office Closed	20  No School	21 Library Open  No School Council Meeting	22 Library Open  No School Recycling Bins	23  Supper at the Rink 5:30 - 7	24
25	26	27  Library Open	28	29  Library Open		